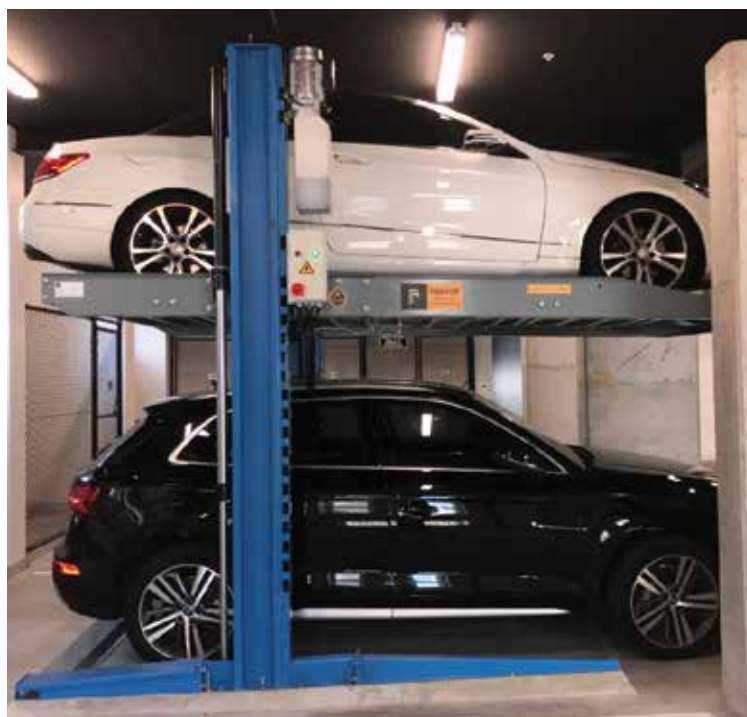
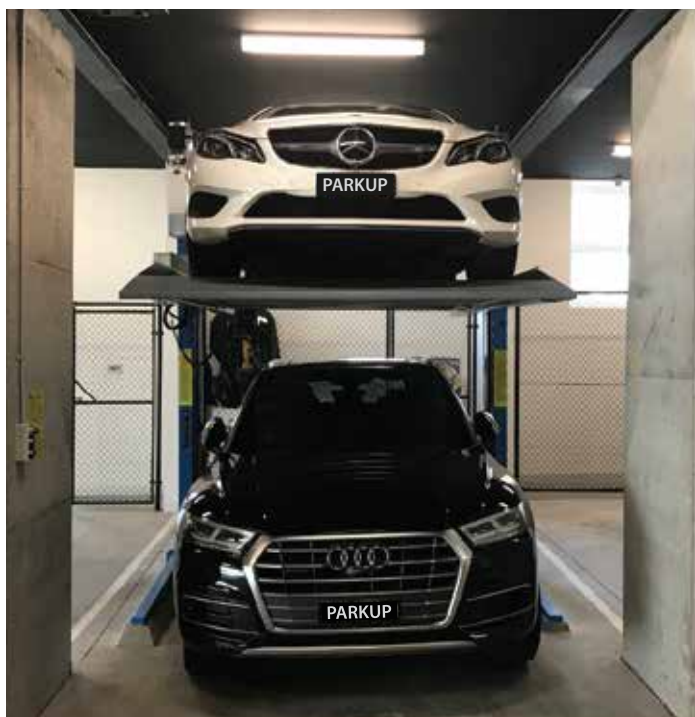




Parkup AL-1132 220

Professional Two Post Parking Hoist

PARKUP BROCHURE



Parkup

F11/8-10 Monomeeth Drive, MITCHAM, VIC. 3132.

P: 1800 727 587 | E: sales@parkup.com.au | W: www.parkup.com.au



Introduction

General Information

Parkup is a two post hydraulic parking hoist. Refer to current WorkSafe regulations Australian Standards AS/NZS 1418.9 VEHICLE HOISTS.

Parkup are focused on the:

- **SAFETY OF PEOPLE**
- **SAFETY OF THE HOIST**
- **SAFETY OF LIFTED VEHICLES**

Only skilled technicians of AUTHORISED DEALERS or SERVICE CENTERS AUTHORISED by the manufacturer shall be allowed to carry out lifting, transport, assembling, installation, adjustment, calibration, settings, extraordinary maintenance, repairs, overhauling and dismantling of the hoist.

Hoist description



Single unit

The AL-1132-220 is a two post parking hoist that developed through continuous research. The hoist enjoys great popularity with the features of simple structure, easy assembling and space-saving.



Excellent for large SUV's / 4WD's

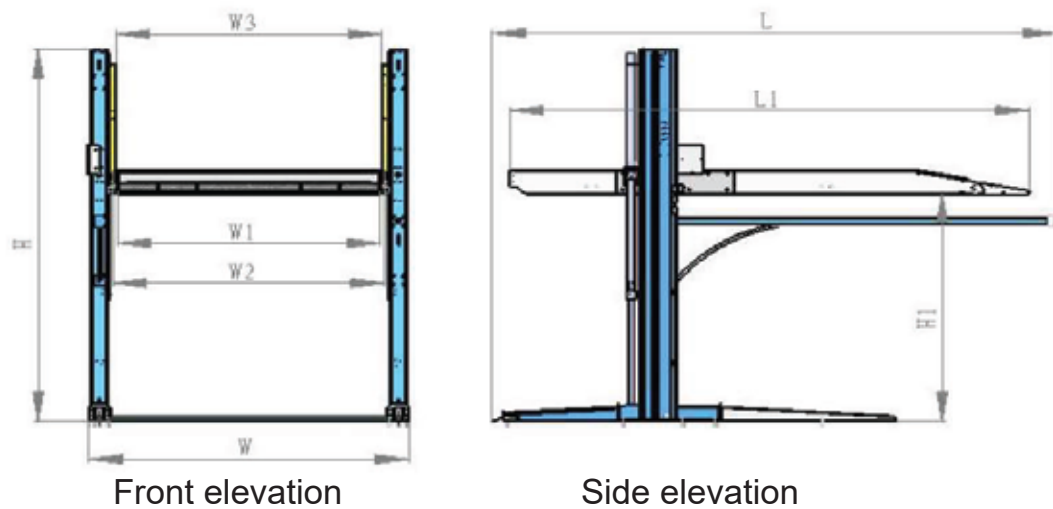
The hoist consists of posts of two sides, carriage of two sides, and wave plate platform. The left and right post can be used in common. The left and right carriage can be double-linked or multi-linked hoist with the column at random.



Double linked unit



Hoist Dimensions



Size code	Size name	value/mm	remark
L	Device length	4318	
L1	Platform length	4166	
W	Device width	2658	Other models see actual size
H	Device height	3497.5	Other models see actual size
H1	Platform height	$0 \leq H1 \leq 2140$	Can be adjusted according to users' requirement
W1	car capacity width	2126	Other models see actual size
W2	platform width	2200	Other models see actual size
W3	Width between carriages	2226	

Hoist Rating

Rated lifting load: 3200 Kg

Rated maximum lifting height: 2.1 meters (about 83 inches)

Total hoist weight: about 1200 Kg.

Australian Worksafe design registration number. WAH 22294

Design Code: AS 1418.9-1996

